

SEWSA 19

ENVISIONING A FEMINIST
AND QUEER SOUTH



MARCH 7-9, 2019

THE SARAH ISOM CENTER FOR WOMEN & GENDER STUDIES



THE UNIVERSITY of
MISSISSIPPI

WELCOME

Welcome to “SEWSA 2019 - Envisioning a Feminist and Queer South” at The University of Mississippi. The Sarah Isom Center for Women and Gender Studies is excited for this collaborative conversation with scholars from across the region and beyond. We thank you for traveling to Oxford join us for three days of sessions, workshops, keynotes, and, most importantly, community building in the southeast. Your participation in this conference and SEWSA is invaluable. We have worked diligently over the past year to provide you with events and information

to make your conference enjoyable and successful. In addition to an exciting schedule of conference sessions, please note our SEWSA caucus panels, chairs and directors networking sessions, Dr. E. Patrick Johnson’s performance on Thursday evening, and several partner-hosted evening events, including Code Pink (a queer-inclusive dance party organized by OutOxford) Thursday night, and a music concert featuring H.C. McEntire Friday night (hosted by UM’S OUTGrad). Plan to use our conference app throughout the conference to network, to find more information about panels and presenters, and (perhaps) to win prizes.

Since our founding in 1981, the Sarah Isom Center has worked to make our campus a better, more inclusive space. In recent years, we have increased efforts to create “feminist and queer” spaces at our university and in our community. In 2015, we started Sarahfest, a women’s arts and culture festival, which has featured musicians like Amy Ray, Neko Case, artists like Claudia DeMonte, and writers such as Ashley M. Jones. Since 2016, we have organized and sponsored the Oxford Pride Weekend each May; the weekend includes a parade, drag shows, film screenings, and a lavender graduation ceremony. Neither of these or our other programming would be



possible without the community partnerships that complement our academic work. Academically, we have created new queer studies courses and a queer studies emphasis in our minor, as well as expanding our graduate minor courses to include World Feminism, Feminist Pedagogy, and Gender Theory. Hosting SEWSA gives us the opportunity to join our individual efforts to those of sister organizations across the South. SEWSA has been envisioning a feminist and queer South for 43 years, and we are excited to look back at our history and look forward to new collaborations and partnerships.

Please feel free to contact one of the conference co-chairs if you have any questions or requests. Jaime Harker can be reached at jlharker@olemiss.edu, and Kevin Cozart can be reached at kcozart@olemiss.edu.

Best wishes for a busy and productive conference!

Sincerely,

The SEWSA 2019 Organizing Committee

PRESIDENT'S WELCOME

As Southeastern Women's Studies Association president, I am delighted to welcome you to the 43rd annual SEWSA Conference—Envisioning a Feminist and Queer South! Hosted by The Sarah Isom Center for Women and Gender Studies at The University of Mississippi, this year's conference theme explores the distinctive role of women's, gender, and sexuality studies programs in the South in fostering interdisciplinary scholarship, social change, and the creation of inclusive spaces.

In addition to three full days of presentations, caucus panels and socials, business meeting and banquet, directors' networking breakfast, chairs' networking luncheon, and a Code Pink in downtown Oxford on Thursday night, I want to highlight this year's exciting conference keynotes. For our opening keynote, Dr. E. Patrick Johnson will present "The Beekeeper: on Collecting the Stories of Black Southern Women Who Love Women." He will also be performing "Put a Little Honey in My Tea" on Thursday at 6:00 PM. Dr. Minnie Bruce Pratt will give the keynote at the annual banquet on Friday at 11 AM. Once again this year, we are offering two preconference workshops: "Oral History: Recording Women's and Queer Voices," which will be facilitated by UM professors Jessie Wilkerson (History and Southern Studies) and Alysia Steele (Multiple Platform Journalism) and "Making Gender Studies Central to your Institution's Mission: A Facilitated Think-Shop," which will be facilitated by Katrina Caldwell, UM Vice Chancellor for Diversity and Community Engagement. I hope you will enjoy the conference to the fullest and take this opportunity to forge new relationships, explore potential collaborations, and get involved in the organization.

SEWSA is a feminist organization that actively supports and promotes all aspects of women's, gender, and sexuality studies at every level of involvement: faculty, graduate and undergraduate students, staff, feminist organizations, community facilitators, grassroots organizers, public scholars,



performers, and artists. We are committed to scholarship on and activism eliminating oppression and discrimination on the basis of sex, gender identity and expression, race, age, religion, sexual orientation, ethnic background, physical ability, and class.

As a regional organization serving Alabama, Florida, Georgia, Kentucky, Mississippi, North Carolina, South Carolina, Tennessee, and Virginia, SEWSA has been advancing feminist thought in the South for over 40 years. We remain committed to rigorous scholarship, transformative activism, collaboration and growing our organization. If you are interested in getting involved with SEWSA—serving on the board, creating a special interest group, hosting a future conference—please let us know! We encourage and welcome all to join!

I wish you a great SEWSA 2019 and look forward to seeing you throughout the conference!

Phyllis Thompson
President, 2018-2020

TABLE OF CONTENTS

Welcome	2
President's Welcome	3
Table of Contents	4
Schedule Overview	5
About SEWSA	6
Accessibility	6
Conference FAQ's	7
Fragrance-free Conference	9
Presenter Information	9
Keynote Speakers	11
Schedule	12
Thursday, March 7	13
Friday, March 8	16
Saturday, March 9	20
About the Sarah Isom Center	22
Conference Sponsors	23
Conference Facilities	24
SeWSA Executive Board	26
Institutional Members	27
SEWSA 2020	28
Notes	30



Get the App!



SCHEDULE OVERVIEW

Thursday:

8:00 AM - 5:00 PM	Registration <i>The Inn at Ole Miss Lobby</i>
8:30 - 11:30 AM	Pre-Conference Workshops <i>Ford A & C</i>
11:45 AM - 12:45 PM	Women's and Gender Studies Chairs' Networking Luncheon <i>McMillan</i>
1:00 - 2:15 PM	Opening Keynote: E. Patrick Johnson <i>Ford A ~ D</i>
2:30 - 3:45 PM	Session 1 Ford A ~ D, McMillan, Butler
4:00 - 5:15 PM	Session 2 Ford A ~ D, McMillan, Butler
6:00 PM	"Put a Little Honey in My Tea" Performance by E. Patrick Johnson Collins Rehearsal Studio
9:30 PM	Code Pink The Lyric Oxford

Friday:

7:30 AM - 5:00 PM	Registration <i>The Inn at Ole Miss Lobby</i>
8:00 - 9:15 AM	Session 3 Ford A ~ D, McMillan, Butler
9:30 - 10:45 AM	Session 4 Ford A ~ D, McMillan, Butler
11:00 AM - 1:00 PM	Business Luncheon and Keynote: Minnie Bruce Pratt <i>Ford A ~ D</i>
1:00 - 2:00 PM	Oxford & University Bus Tours and Organization Fair The Inn at Ole Miss Green
2:00 - 3:15 PM	Session 5 Ford A ~ D, McMillan, Butler
3:30 - 4:45 PM	Session 6 Ford A ~ D, McMillan, Butler
5:00 - 6:15 PM	Session 7 Ford A ~ D, McMillan, Butler
6:30 PM	Caucus Socials Proud Larry's

Saturday:

7:30 - 8:30 AM	Women's Centers Directors' Networking Breakfast McMillan
8:30 AM - 1:00 PM	Registration <i>The Inn at Ole Miss Lobby</i>
9:00 - 10:15 AM	Session 8 Ford A ~ D, Butler
9:00 - 11:45 AM	SEWSA Board Meeting McMillan
10:30 - 11:45 AM	Session 9 Ford A ~ D, Butler
12:00 - 1:15 PM	Session 10 Ford A ~ D, Butler

Full Meeting Room Names:
(all are located in the Inn at Ole Miss unless otherwise noted)

- Ford: Gertrude C. Ford Ballroom
- McMillan - McMillan Boardroom
- Butler - Butler Auditorium
- Collins Rehearsal Studio - Mary Ann Mobley and Gary Collins Rehearsal Studio - Gertrude C. Ford Center for the Performing Arts

Tracks:

There are four main tracks for SEWSA 2019. They and their room assignments are:

Activism - Ford A
Literature - Ford B
Pedagogy - Ford C
The Queer South - Ford D

Sub-tracks are denoted in the conference app.

ABOUT SEWSA

SEWSA has been advancing feminist thought in the South for over 40 years, and we welcome you as we continue this endeavor for many more years to come.

SEWSA is a feminist organization that actively supports and promotes all aspects of Women's and Gender Studies at every level of involvement: faculty, graduate and undergraduate students, feminist organizations, community organizers, public scholars and more!

Our organization is committed to scholarship and activism dedicated to eliminating oppression and discrimination on the basis of sex, gender identity and expression, race, age, religion, sexual orientation, ethnic background, physical ability, and class.

SEWSA is a regional organization under the serving Alabama, Florida, Georgia, Kentucky, Mississippi, North Carolina, South Carolina, Tennessee, and Virginia.



We remain committed to regional collaboration as well as the growth of our organization. If you are interested in getting involved with SEWSA—whether serving on the board, creating a special interest group, or hosting a future conference—please let us know! We encourage and welcome all to join us!

Contact: sewsaorg@gmail.com.

ACCESSIBILITY

SEWSA strives to create an environment that is usable for as many people as possible. We must balance that goal against limited fiscal resources, an all-volunteer workforce, and the paradox that one person's accommodation is sometimes another person's barrier.

Allies: How Every Attendee Contributes to an Accessible Environment

Please consider the following beneficial behaviors to make this conference as accessible as possible for attendees:

The English language:

The pronouns we use to describe one another incorrectly presumes that gender is obvious and readable for each person. We encourage you not assume any person's gender identity, pronoun usage, or other aspects of their identities. Whenever you feel

unsure, please ask the person to whom you are speaking what pronouns they use, or look at the pronoun ribbon that some attendees may choose to wear along with their name tag.

Maintain clear paths:

Please be conscious of the "traffic jams" that sometimes occur in doorways and hallways, and how they can impede others' mobility. When possible, take your conversations to the hotels' common areas and leave the hallways leading to the conference rooms clear.

Share the air:

Smoke and scents travel quickly, and air won't move if you ask it to. Washing your hands after smoking makes a difference. The University of Mississippi and the Inn at Ole Miss are smoke-free.

Service Animal Etiquette:

Although interacting with animals



is tempting, please don't pet, distract, or take photos of service animals at the conference. Those of us who rely on service animals need our animals to be able to concentrate on doing their jobs well.

We welcome your comments and discussion about how we can create better access at this conference for future events. Please email sewsa.conference@gmail.com or visit the registration desk on site with any accessibility questions or requests.

CONFERENCE FAQ'S

For those new to SEWSA and for those returning, welcome! We are proud of the history and culture of our conference as an inclusive and supporting space. In that spirit, below are some answers to questions you may have if you are joining us for the first time or returning after a few years. If you have any other questions, feel free to drop us a line at sewsa.conference@gmail.com

Attending:

Are undergraduate and graduate students allowed to attend sessions, panels, roundtables and speaker events?

Absolutely! This conference is for all WGS scholars at every level. We encourage and welcome student attendance and participation at all of our conference events. You are the future of WGS scholarship, and your participation is important. Support your fellow students, scholars, faculty and others by attending their sessions. Find an event that interests you and go! This conference is for you!

What if there are two panels/ events at the same time and I want to attend both?

Try to go to both. This happens often in WGS conferences—so many great talks and panels, and we can't decide which one to attend. Conference panels and events will try to stay true to the schedule. We ask that if you plan to leave one panel in order to listen to another, you sit toward

the back of the room and exit quietly. It is okay to quietly enter another panel that has already begun. You are welcome to join another event already in progress.

When can we ask questions and contribute meaningful comments?

Moderators are encouraged to leave time at the end of each panel for questions and comments. This is the perfect time to show your support for a fellow scholar with thoughtful questions and meaningful comments. Please feel free to participate.

What is the dress code for the SEWSA conference?

Dress code for attendees and presenters is whatever folks feel most comfortable wearing - from business casual to your favorite queer fashion! Far be it for us to impose rules on how folks should dress. This is a supportive space for all, and every expression and presentation is welcome.

Can I use my smartphone during events and sessions?

We encourage consideration of others if you chose to use your smartphone or devices during sessions. The best idea is to silence your device at the beginning of the day. If you need to use it during a presentation, please be polite and use discretion.

For keynotes, events, networking sessions and more...we love the pics, shares and posts!

Presenting:

This is my first time presenting at a conference. What do I need to know?

Your panel moderator will coordinate with you in advance to discuss presentation order, A/V needs and address any questions you may have. We encourage presenters to arrive early to their scheduled room/location. When you arrive, your moderator and/or conference host will help you set up any A/V, review presentation order and make introductions.

Please respect your panel and your participant's by staying on time. Your moderator will keep the time and let you know if you are getting toward the end. We have a full schedule, and moderators will have to kindly stop you if you go over time.

SEWSA & Caucuses:

Who is the SEWSA Board and can I join?

SEWSA is a non-profit with a board of officers who oversee and manage the operations of the organization. They meet several times a year to coordinate with the SEWSA conference hosts and plan the annual conference, coordinate with new and returning members, and collaborate in order to foster feminist scholarship in the region.

SEWSA's executive board is comprised of Women's and Gender Studies academics and practitioners based in

the Southeast, who—after participating in SEWSA conferences over the years—accepted either an appointment or a nomination to a leadership position. So if you have an interest in collaborative leadership, let one of our board members know, and we can tell you what positions will be opening up soon. The first step is to come to the conference and see what SEWSA is all about. The most important qualification is a passion for Women’s and Gender Studies and a desire to see it continue to thrive in the region!

Can I vote as a member of SEWSA?

All SEWSA members* are encouraged to participate in our annual elections. Members will receive advance emails and onsite communications in regards to nominations for open positions. Voting takes place during the Conference Meeting & Lunch using an online platform and smartphone technology. Please let a member of the SEWSA Board know if you cannot access this technology. We are happy to take your vote manually.

*SEWSA members are those who paid their individual membership as a conference presenter (required for all presenters) or those who paid for their individual membership directly through SEWSA or the host institution. If you are not sure about your membership status, please contact the Director of Membership & Outreach, Dr. Heather Brown at hbrown56@uncc.edu.

What is the SEWSA Conference Meeting & Business Lunch...and can I go?

Absolutely! The SEWSA Conference Meeting and Lunch is where we recognize students and institutions with a variety of awards, vote on SEWSA Board elections and more! This is also a wonderful lunch provided by our host institution where most conference attendees gather and is for you to enjoy. All conference registrants and presenters are welcome.

What is a caucus...and can I go?

Sure! SEWSA has three caucuses: the LGTBTQ Caucus, People of Color Caucus, and Student Caucus.

Our caucuses are designated groups that are under-represented within society or SEWSA as an organization. SEWSA believes that members whose identities, voices, and points of view may be numerically under-represented within SEWSA might not find an organizational base or be able to make themselves heard without caucus representation.

Check the conference schedule for each Caucus networking session and each caucus panel...and feel free to go to any with which you identify. More info below.

How can I learn more about the LGBTQ Caucus?

Come to our annual session or join us during our networking events at the conference (see schedule)! Or email the LGBTQ Caucus Chair, Hilary Malatino, at hilary.malatino@gmail.com for more information! The LGBTQ caucus of SEWSA provides opportunities for LGBTQ

people and their allies to share research, theory, information, resources, and experiences. The caucus works to encourage recognition of the diversity of LGBTQ people, increase visibility, and encourage coalition building, especially through scholarship, and regularly sponsors a session or sessions at the annual meeting of the Southeastern Women’s Studies Association.

Can I go to the People of Color Caucus events?

Please do attend the People of Color Caucus panel and networking session! The People of Color Caucus seeks to build visibility, solidarity, and scholarship which centres the experiences of people of color. We look forward to your participation in the panel and in the networking session. Come meet your caucus chair (Dr. Sushmita Chatterjee) and frame the conversation for your caucus. How should we responsibly imagine differences? Invoking Audre Lorde, how do we frame differences to be catalysts for change?

For more info about the POC Caucus, email Dr. Chatterjee at chatterjees@appstate.edu.

I’m a WGS student? Can I go to the Student Caucus events?

Yes! Undergrads and Grads are welcome! Meetup at the Student Caucus event and/or panel! This is a great opportunity to connect with other WGS students in the region, talk about undergrad to graduate transitions and more! A few WGS faculty will also be there to chat about questions you may

have about your WGS education and career opportunities.

This is your time and space to discuss feminist and WGS concerns you may have about your scholarship or your campus. The student caucus provides opportunities for inter-institutional networking among

students in the region. The caucus is further tasked with bringing the concerns of students to the attention of the SEWSA Executive Board. Join us!

We encourage you to stop by the SEWSA table in the registration area! We have cool SEWSA swag! We are also here to answer any

more questions you may have and look forward to meeting you!!

Find us at:

- @sewsaorg (Twitter)
- Southeastern Women's Studies Association (Facebook)

FRAGRANCE-FREE CONFERENCE

In the interest of supporting our colleagues with sensitivity to alcohols and scent, we ask that attendees refrain from wearing perfumes or fragrances.

Perfumes and fragrances (including scented lotions) can negatively affect people with multiple chemical sensitive syndrome (MCS), asthma, and/or autoimmune disorders.

For every 100 people in America, there are an average of 10 with asthma, 20 with an autoimmune disorder, and/or 12.5 with MCS.

PRESENTER INFORMATION

General Information for Presenters

- Sessions are 75 minutes long. If you are on a panel with 4 presenters, plan to speak for 10-12 minutes to allow time for discussion and questions at the end.
- Know the time and location of your session. If possible, visit the room prior to your talk so you have a sense of the space.
- Arrive at the assigned room as early as you can and set up quickly to allow the session to start on time.
- End your session on time – exceeding time makes it harder for the next set of presenters to prepare for their session, and causes your attendees to arrive late to their next session.
- When presenting, talk at a normal speaking rate, loudly

enough for those in the back of the room to hear. Vary your speech patterns to avoid a monotone presentation.

- Even if reading a paper, make every effort to look at your audience and engage them in your presentation.
- Do not exceed your time – doing so negatively impacts the others in the session. Practice your presentation prior to the conference to ensure that you are able to cover desired material in the allotted time.
- If your session includes discussion or questions, ensure that those speaking take turns so that attendees can focus on the contributions of one participant at a time.
- Take care that sounds from your session do not negatively affect other sessions occurring in adjoining rooms.
- Expect that session attendees

will be interested in talking to you further about your work – come prepared with business cards or other materials that can help others contact you after the conference.

- If you are unable to make your presentation, either find a colleague to share your materials, or inform the moderator of your absence.

Accessibility Requirements

SEWSA is committed to making arrangements that allow all members of the association to participate in our annual conference.

- When presenting, stand at the podium to take advantage of the microphone regardless if you are using the audio visual equipment.

- When speaking, position your face at an angle that allows participants to read your lips. Avoid speaking while facing away from the audience, or while looking down at papers or screens.
- Access Copies: Presenters should plan to bring five copies of their papers, even in draft form, for the use of attendees who wish to follow the written text. Presenters who use handouts should prepare some copies in a large-print format (Sans-serif font, 16-point type size). Presenters should indicate whether they want their papers and handouts returned.
- Please describe any power points or visuals.
- If engaging in experiential activities make sure you have planned for the inclusion of all, regardless of physical abilities.
- If you are planning on showing video during your presentation, please plan on captioning/subtitling your video or having transcripts available.
- Consider making it possible for attendees to obtain an electronic version that allows for type size adjustments or use of text readers (creating audio from written text).
- NWSA asks that all presenters and attendees refrain from wearing perfumes and other scented products while participating in conference activities.
- Please say your name before asking a question

Presenting a Paper

- Presenting a paper does not mean simply reading your paper. Ideas that are clearly, and perhaps cleverly, communicated in writing may not always appear so when presented aurally. Practice the presentation to ensure that your ideas can be communicated well in the conference format.
- You will not be able to share everything you know about your subject in the time allotted. Your goal should be to highlight the most interesting aspects of your work, and to create enough interest in your topic to encourage the audience members to seek out your completed paper for additional information.
- Make sure you have a strong opening and closing to your talk, and have identified some body material that can be eliminated should you find yourself short on time. Do not sacrifice the closing since this is the summative information about your work.
- It takes about 2 minutes to read a double-spaced page, so a 7-8 page paper would yield a 15 minute presentation. Plan your time wisely, taking into consideration the number of panelists and the desire for post-presentation discussion.
- Be careful with the amount of editorializing you do during your presentation – time taken for this commentary may lengthen your talk if you timed your discussion based on your written work.

- Consider printing your paper in 16-point font so it will be easy for you to read; you may wish to mark pauses and points of emphasis so you can note them with your voice.
- Prepare yourself for questions: allow for disagreement and do not be afraid to say “I don’t know,” or “That’s a point I hadn’t considered.”

Use of Audiovisual Equipment

- Audio-visual equipment will be available in all rooms and sessions. Although there will be technicians on hand to ensure that the requested audio-visual equipment is available and working properly, it is the presenter’s responsibility to be familiar with the equipment.
- Make sure to work with the moderator and other presenters to ensure that the flow of the session is planned in a manner that allows a quick transition from speaker to speaker regardless of equipment used.
- Although one hopes not to need it, create a back-up plan in case the audio-visual portion of the presentation cannot be used (i.e. disc error, faulty equipment, etc).
- While internet access is available in all spaces, it is better to download and embed all online resources to ensure availability.

Adapted from the 2018 NWSA Program.

KEYNOTE SPEAKERS

E. Patrick Johnson

A native of North Carolina, E. Patrick Johnson has published widely in the areas of race, class, gender, sexuality, and performance. Johnson is a prolific performer and scholar, and an inspiring teacher, whose research and artistry has greatly impacted African American studies, performance studies, and sexuality studies.



He is the author of two award-winning books, *Appropriating Blackness: Performance and the Politics of Authenticity*, and

Sweet Tea: Black Gay Men of the South—An Oral History. He is the editor of *Cultural Struggles: Performance, Ethnography, Praxis* by Dwight Conquergood (Michigan UP, 2013) and co-editor (with Mae G. Henderson) of *Black Queer Studies—A Critical Anthology* and (with Ramon Rivera-Servera) of *solo/black/woman: scripts, interviews, and essays* and *Blacktino Queer Performance* (Duke UP, forthcoming). He recently published a companion text to *Sweet Tea*, entitled, *Honeypot: Southern Black Women Who Love Women* and is working on an edited collection of new writings in black queer studies tentatively titled, *No Tea, No Shade: New Writings in Black Queer Studies*.

His staged reading, “Pouring Tea: Black Gay Men of the South Tell Their Tales” is based on his book, *Sweet Tea*, and has toured to over 100 college campuses from 2006 to the present. His performance in Oxford, “Put A Little Honey In My Sweet Tea,” combines narratives from *Sweet Tea* and *Honeypot*.

Minnie Bruce Pratt

Originally from Centreville, Alabama, Minnie Bruce Pratt received a B.A. from the University of Alabama and a Ph.D. in English Literature at the University of North Carolina at Chapel Hill. She is professor of Women’s & Gender Studies and Writing & Rhetoric at Syracuse University, where she also serves as faculty for a developing Lesbian/Gay/Bisexual/Transgender Studies Program.

For five years she was a member of the editorial collective of *Feminary: A Feminist Journal for the South, Emphasizing Lesbian Visions*. She has published six books of poetry, *The Sound of One Fork*, *We Say We Love Each Other*, *Crime Against Nature*, *Walking Back Up Depot Street*, *The Money Machine*, and *The Dirt She Ate: Selected and New Poems*.

In 1989, *Crime Against Nature*, on Pratt’s relationship to her two sons as a lesbian mother, was chosen as the Lamont Poetry Selection by the Academy of American Poets, an annual award given for the best second full-length book of poetry by a U.S. author.

In 1992 her book of autobiographical and political essays, *Rebellion: Essays 1980-1991*, was a Finalist in Non-Fiction for the Lambda Literary Awards. Her book of prose stories about gender-boundary-crossing, *S/HE*, was one of the five finalists in Non-Fiction for the 1995 American Library Association Gay, Lesbian, and Bisexual Book Award.

Pratt has been active in organizing that intersects women’s and gender issues, LGBT issues, anti-racist work, and anti-imperialist initiatives. She is a member of the National Writers Union-UAW Local 1981, and works with the International Action Center and its Women’s Fightback Network.





SCHEDULE

THURSDAY, MARCH 7

8:30 – 11:30 AM

Preconference Workshops

(Registration Required)

Oral History Workshop: Recording Women's and Queer Voices

UM professors Jessie Wilkerson, History and Southern Studies, and Alysia Steele, Multiple Platform Journalism, will lead a workshop on collecting oral histories, archiving them, teaching them, and translating them into creative nonfiction. Participants will learn technical and creative skills related to documenting oral histories. They will also discuss the challenges of weaving oral histories together to create larger projects. Lastly, they will model how to build classes around collecting oral histories at the undergraduate and graduate levels.

Dr. Wilkerson and her spring 2018 Southern Studies graduate class collected oral histories from queer Oxonians and created the first queer archive at the University of Mississippi. She is author of the book *To Live Here, You Have To Fight: How Women Led Appalachian Movements for Social Justice*. Prof. Steele is a Pulitzer Prize-winning photojournalist and author of *Delta Jewels: In Search of My Grandmother's Wisdom*, a collection of oral histories and portraits of fifty church mothers from the Mississippi Delta. She is also an Isom Fellow and will be leading an undergraduate class on collecting oral histories of Oxford's elder women and translating them into podcasts. Open to all conference attendees.

Making Gender Studies Central to Your Institution's Mission: A Facilitated Think-Shop

Join Dr. Katrina Caldwell, Vice Chancellor for Diversity and Community Engagement at the University of Mississippi, to consider productive partnerships between Gender Studies programs and institutions' larger diversity goals. While anxieties about the future of Gender Studies programs have spiked in recent years, most universities understand that having these programs is important. What can be chal-

lenging is making sure that Gender Studies programs thrive and remain vibrant, and resist the tendency of institutions to ignore them and make them feel isolated. What might a thriving Gender Studies program look like today? What partnerships, strategies, and programs will get us there? How can we make this happen?

Dr. Caldwell has decades of experience in diversity programs and has built constructive partnerships over the years, including at DePaul University. She will facilitate a wide-ranging conversation in this workshop, to consider the challenges and barriers to such work, the relationships that help it thrive, examples of successful programs, and the elements of effective partnerships and programs. This is in many ways an aspirational workshop, drawing on participants' expertise and experience to map assets, consider possibilities, and make innovative plans for thriving futures in their programs. This workshop is beneficial for Gender Studies Programs, Women's Centers, and LGBTQ Centers.

11:45 AM – 12:45 PM

Women's and Gender Studies Chairs Luncheon

Join your fellow chairs for a casual conversation about issues facing WGS departments. Space limited. RSVP required.

McMillan Boardroom

1 – 2:15 PM

Opening Keynote: Dr. E. Patrick Johnson

"The Beekeeper: On Collecting the Stories of Black Southern Women Who Love Women."

Ford Ballroom

Session 1: 2:30 – 3:45

1A - Ford A

Activism Transnationally

Moderator: Minjoo Oh, UM

- **Holt, Stephanie** (Appalachian State University ~ Undergraduate) * *La Pachamama: Reimagining “Ecofeminism” in the Ecuadorian Amazon*
- **Mohammed, Esosa** (East Tennessee State University ~ Graduate) * *“Nigerian Women As Potential Agents of Socio-Cultural Change in the Face of Adverse Widowhood Practices”*

1B - Ford B

Quare African American Literature

Moderator: Shennette Garrett-Scott, UM

- **Daniels, William** (Bowling Green State University ~ Graduate) * *Queer City: Love and Resistance in James Baldwin’s Another Country*
- **Heying, Sarah** (University of Mississippi ~ Graduate) * *Worrying Ourselves Silly: (Dis)identification in Sharon Bridgforth’s Quare Juke Jernt*
- **King, Valerie** (University of Georgia ~ Undergraduate) * *Performative Identities in Antebellum Slave Narratives*
- **LeRoy-Frazier, Jill** (East Tennessee State University ~ Faculty) * *“Gambling against history:” Literacy, Trauma, and Cultural Change in Octavia E. Butler’s Kindred*

1C - Ford C

Interrogating Space and Affect: Counter-publics and Trans-publics

Moderator: Phyllis Thompson, East Tennessee State

- **Purvis, Jennifer** (The University of Alabama ~ Faculty) * *Post-SlutWalk Reflections (on Publicity, Shame, Sexual Justice, and Queer, Feminist Counterpublics)*
- **Chatterjee, Sushmita** (Appalachian State University ~ Faculty) * *Queering Transnational Inter-(actions)*
- **Malatino, Hilary J.** (Penn State University ~ Faculty) * *Trans Skepticism*

1D - Ford D

Gender and the Contemporary South

Moderator: Noell Wilson, UM

- **Barrett, Frances** (University of Mississippi ~ Graduate) * *Gender at the Dollar General Store*
- **Spivey, Kelly** (University of Mississippi ~ Graduate) * *Just Add Eggs: Cake Mix, Gender, Race, and Class in the South*

1E - Butler Auditorium

Unapologetically Southern. Unapologetically Queer. Queer Archiving as Resistance

Moderator: Hooper Schultz, UM

- **Sullivan, Maigen** (Invisible Histories Project ~ Director of Development)
- **Burford, Joshua** (Invisible Histories Project ~ Director of Community Engagement)

1F - McMillan Boardroom

Digital Spaces of Resistance

Moderator: Angela Green, UM

- **Heifner, Pepper** (East Tennessee State University ~ Undergraduate) * *Trans Stories, Trans Voices: Representation, the Internet, and Agency*
- **Rivers, Jade** (Georgia Writers Association / Kennesaw State University ~ Graduate) * *Instagram as Space for Rhetorical Discourse on Disability*

Session 2: 4:00 – 5:15

2A - Ford A

Activism and Pop Culture

Moderator: Le’Trice Donaldson, UM

- **Thornton, Finley** (Texas Woman’s University ~ Graduate) * *Historical Perspective of Education as Activism with Emphasis on Comic Strips as Social Justice*
- **Watts, Meghan** (University of North Carolina at Chapel Hill ~ Undergraduate) * *“Hands Up! Don’t Shoot!”: Examining Repression Performance in Ferguson*

2B - Ford B

Women and Southern Gothic

Moderator: Deborah Barker, UM

- **Bosarge, Taylor** (University of Mississippi ~ Undergraduate) * *Punishing with Motherhood: An Exploration of Faulkner’s Punishment of Sexuality through Pregnancy*
- **Davis, Laura** (Kennesaw State University ~ Faculty) * *The Smeller’s Almost Always a Feller: Gender and the Power of Smell in Faulkner’s Fiction*
- **Reichert, Nancy** (Kennesaw State University ~ Faculty) * *“I Can Always be a Ph.D.”: Issues of Intersectionality for Flannery O’Connor and Today’s Southern, Disabled, White Women*

2C - Ford C

Teaching Through Thorns: An Interactive Roundtable on Today's Prickly Classroom Issues

Moderator: Milton Wendland, University of South Florida

- **Golombisky, Kim** (University of South Florida ~ Faculty)
- **Serls, Tangelia** (University of South Florida ~ Faculty)
- **Tilghman, Carla** (University of Kansas ~ Graduate)
- **Wendland, Milton** (University of South Florida ~ Faculty)

2D - Ford D

Queering the South

Moderator: Amy McDowell, UM

- **Charles, Amelia** (East Tennessee State University ~ Graduate) * *Queer(ing) Appalachia: Reclaiming Belonging from Queerphobic Myths*
- **Kennedy, Madeline** (University of Alabama ~ Graduate) * *Consider This: Southern Queer Identity in R.E.M.'s "Losing My Religion"*
- **Spence, Sheffield** (University of Arkansas ~ Graduate) * *Come One, Come All, to the Debutant Gender Ball!*

2E - Butler Auditorium

Queer Mississippi: Oral History Performance

Moderator: Jessica Wilkerson, UM

- **Smith, Jonathan** (University of Mississippi ~ Graduate)
- **Knight, Mary** (University of Mississippi ~ Graduate)
- **Campbell, Ellie** (University of Mississippi ~ Graduate)
- **Barrett, Frankie** (University of Mississippi ~ Graduate)
- **Heying, Sarah** (University of Mississippi ~ Graduate)
- **Herron-July, Kaimara** (University of Mississippi ~ Graduate)
- **Schultz, Hooper** (University of Mississippi ~ Graduate)

2F - McMillan Boardroom

Feminism and Digital Humanities

Moderator: Stephen Monroe, UM

- **Firster, Lindsay** (University of South Florida ~ Graduate) * *Humanities for Everyone: Using Feminist Digital Humanities to Challenge, Create, and Connect Communities*
- **Sharma, Riddhima** (Bowling Green State University ~ Graduate) * *Mainstreaming Women's Writing in India: Digital Archiving as Feminist Activism*

6:00 PM

Performance and Q & A:

Dr. E. Patrick Johnson:

"Put A Little Honey in My Sweet Tea"

Sponsored by the Division of Diversity and Community Engagement

Mary Ann Mobley & Gary Collins Rehearsal Studio - Gertrude C. Ford Center for the Performing Arts

9 PM

Code Pink: "Space Cowboy"

Cowboys and Aliens!

Code Pink offers a safe space for the LGBTQ+ community and friends to enjoy a full night of dancing and an intergalactic-themed drag show. Come meet and make new friends.

What to Wear?

We encourage goers to wear space inspired attire or wild west gear. No guns, lasers, or weapon props allowed to the event. Once again, WE COME IN PEACE.

The Lyric Oxford



FRIDAY, MARCH 8

Session 3: 8:00 – 9:15

3A - Ford A

Economics, Activism, and the South

Moderator: Darren Grem, UM

- **Green, Sharony** (University of Alabama ~ Faculty) * *“Sunshine the Way it is Done in Florida,” or Miami as a Space of Refuge for Zora Neale Hurston*
- **Unger, Don** (University of Mississippi ~ Faculty) * *The Poor People’s Corporation and Black Women’s Leadership in Contemporary Activism*

3B - Ford B

Author Meets Critics: A Roundtable Discussion on The Lesbian South: Southern Feminists, The Women In Print Movement, and The Queer Literary Canon with Jaime Harker

Moderator: Julia Ehrhardt, University of Oklahoma

- **Arnold, Roberta**
- **Bibler, Michael** (Louisiana State University ~ Faculty)
- **Blank, Hanne** (Denison College ~ Faculty)
- **Ehrhardt, Julia** (University of Oklahoma ~ Faculty)
- **Harker, Jaime** (University of Mississippi ~ Faculty)

3C - Ford C

Pedagogy and Care

Moderator: Deborah Mower, UM

- **Marsh, Heidi** (East Tennessee State University ~ Staff) * *“Safe enough to learn”: Attending to Trauma in Higher Education*
- **Thompson, Phyllis** (East Tennessee State University ~ Faculty) * *“Safe enough to learn”: Attending to Trauma in Higher Education*
- **Wendland, Milton** (University of South Florida Tampa ~ Faculty) * *Expansive Mentoring: 10 Tips for Mentoring Beyond the One-on-One Model*
- **Yuce, Muge** (Georgia State University ~ Graduate) * *Feminist Humor as an Affective Pedagogy: An Antidote Against the Violence of Offensive Forms of Humor*

3D – Ford D

God, Gays, and Appalachia

Moderator: Jessie Wilkerson, UM

- **Bevins, Lia** (East Tennessee State University ~ Graduate) * *A New Future for LGBTQ+ in the Churches of Appalachia*
- **LeRoy-Frazier, Jill** (East Tennessee State University ~ Faculty) * *Design Thinking for Equality in the Church*

3E - Butler Auditorium

Writing, Publishing, Persisting: A Conversation

Moderator: Stacy Keltner, Kennesaw State University

- **Guglielmo, Letizia** (Kennesaw State University ~ Faculty)
- **Jackson, Jaleesah** (Kennesaw State University ~ Faculty)
- **Keltner, Stacy** (Kennesaw State University ~ Faculty)
- **McFarland, Ashley** (Kennesaw State University ~ Faculty)
- **Purvis, Jennifer** (The University of Alabama ~ Faculty)

3F - McMillan Boardroom

Queer Clay, Bodies, and Diasporas

Moderator: Nancy Wicker, UM

- **DiGiacomo, Valentina** (Appalachian State University ~ Undergraduate) * *Queer Diasporas and Indian Reimaginings*
- **Hochwarth, Taylor** (Appalachian State University ~ Undergraduate) * *Bodies & Borders: A Queer-Feminist Engagement*
- **Kahn, Sope** (Appalachian State University ~ Undergraduate) * *Queer Bodies of Clay*

Session 4: 9:30 – 10:45

4A - Ford A

Health, Family, Women, Equity

Moderator: Marie Barnard, UM

- **Blank, Hanne** (Denison University ~ Faculty) * *Sisterhood and Strife: The Southern Making and Unmaking of the National Black Women’s Health Project*
- **Carter, Allison** (University of North Carolina at Chapel Hill ~ Undergraduate) * *Performing Pain: Gender, Power, and Negotiation in Women’s Chronic Illness Narratives*
- **Kadima, Nicole** (Georgia Southwestern State University ~ Undergraduate) * *Punishing the Poorer Parent: How through social policy, the government perpetuates gender expectations for the lower class women of the United States*

4B - Ford B

Transnational Feminisms and Literature

Moderator: Heather Allen, UM

- **Marting, Diane** (University of Mississippi ~ Faculty) * *Feminist Satire in the Global South: Luisa Valenzuela's short stories*
- **Oloyede, Tobi** (East Tennessee State University ~ Graduate) * *Feminist Consciousness in Buchi Emecheta's Second-Class Citizen*
- **Simon, Shenée** (Southern Connecticut State University's ~ Graduate) * *Chronicles of a black scholar activist feminist in Spanish speaking South*

4C – Ford C

Student Caucus: The Global South

Moderator: Laura Wilson, UM

- **Zamantakis, Alithia** (Georgia State University ~ Graduate) * *How Trans Violence 'Travels': Remembering Others' Violence as One's Own*
- **Holmes, Tanisha** (Spelman College ~ Undergraduate) * *Black Women and Girls Living In the Mississippi Delta and Unincorporated Cities In Mississippi*

4D - Ford D

Feminist and Queer Transformations of the Church

Moderator: Gail Stratton, UM

- **Bodenlos, Lauren** (Agnes Scott College ~ Undergraduate) * *God the Leviathan: Women's Obligation to Dissolve the Body of Christ*
- **Davenport, Erin** (University of North Carolina-Chapel Hill ~ Graduate) * *Queer Eye Gazes Forward: Futurity, Camp, and the Black Church*

4E – Butler Auditorium

Life, Death, and Discord: Contemporary Radical Feminist Impacts

Moderator: Theresa Starkey, UM

- **Albright, Rebecca** (University of Arkansas ~ Graduate) * *Sowing Discord in the Southern Soil of Jeff Vandermeer's "Southern Reach" Trilogy and Nnedi Okorafor's "Lagoon"*
- **Savage, Jordan** (University of Arkansas ~ Graduate) * *"Women are death's natural companions": Radical Feminism in the Face of Death/Dying*
- **Vogt, Kaitlyn** (Independent Scholar) * *Transforming Durham: Organizing and Resisting in a Growing Southern City*

4F - McMillan Boardroom

Affect and Social Change

Moderator: Karen Raber, UM

- **Clayborn, Elizabeth Ashley** (University of Georgia ~ Graduate) * *Corporeal Remembering: Extending Memory Work to the Body*
- **Rubin, David** (University of South Florida ~ Faculty) * *Transing Negative Affect: How to Do Things with Bad Feelings*

11 AM – 1 PM

Luncheon and Keynote: Minnie Bruce Pratt

"The Queer South: Where the Past is Never Past and the Future is Now"

Join us for the annual luncheon and business meeting followed by a keynote by Minnie Bruce Pratt. Annual awards and grants will be announced at the luncheon. Keynote open to all; no RSVP required.

Ford Ballroom

1 - 2 PM

Organization Fair and Tours

Take a break and explore local and regional organizations, university departments, or campus and Oxford. Weather permitting, one of Oxford's historic double decker buses will be available for a tour of the campus and Oxford.

The Inn Patio and Porte-Cochère

Session 5: 2:00 – 3:15

5A - Ford A

Feminist Policy and Civic Engagement

Moderator: Melissa Bass, UM

- **Dodds, Kayla** (University of South Florida ~ Independent Scholar) * *The key to empowerment: Shifting the domestic violence approach towards intersectionality*
- **Drinnon, Erin** (East Tennessee State University ~ Undergraduate) * *A Feminist and Disability-Inclusive Approach to Combating the Opioid Crisis*
- **Jackson, Jalessah** (SisterSong ~ Georgia Coordinator) * *U.S South to Global South: On Transnational Black Feminisms and Reproductive Justice*
- **McCarthy, Samantha** (College of Charleston ~ Undergraduate) * *Women's Education: Impact on Confidence and Political Participation*

5B - Ford B

Cold War Queer South

Moderator: Ari Friedlander, UM

- **DiGregorio, Savannah** (University of Mississippi ~ Graduate) * *“Now skidaddle and take that filthy hound with you”*: *Animal Queer, Southern Culture, and Human-Animal Profiling in Truman Capote’s Other Voices, Other Rooms*
- **Knight, Mary** (The University of Mississippi ~ Graduate) * *Hubert Creekmore’s The Welcome: Gay Men or the Dangers of Feminist Women?*

5C – Ford C

LGBTQ Caucus: Queer Insurgencies

Moderator: Hilary Malatino, Penn State University

- **Greensmith, Cameron** (Kennesaw State University) * *Understanding Young Queers as Activists: Fostering Social Change Beyond Inclusion*
- **Rubin, David** (University of South Florida ~ Faculty) * *“Too Cute to Be Binary”*: *Political Affect in Contemporary Intersex Activism*

5D - Ford D

Personal Narratives of Queer Faith in the South

Moderator: Aileen Ajootian, UM

- **Swenson, Erin** (Somebody Cares, Inc. ~ Post-Doc)
- **Tuttle, Connie** (Circle of Grace Community Church ~ Non-Academic Presenter)

5E - Butler Auditorium

Beyond Marinetti’s Fists: Women of the Historical Avant-Garde

Moderator: Peter Wood, UM

- **Morrow, Madison** (University of Mississippi ~ Undergraduate) * *“Madame Rachilde and Symbolism: Gender Provocateur, Playwright, Producer”*
- **Busick, Chloe** (University of Mississippi ~ Undergraduate) * *“Moving Objects: The Legacy of Sophie Taeuber’s Dada Puppets”*
- **Uecker, Liela** * (University of Mississippi ~ Undergraduate) * *“Back to the Futurism: Valentine de Saint-Point”*

5F - McMillan Boardroom

Every Body Matters(?): Reimagining “Acceptable” Ways of Black Female Being

Moderator: Shawnboda Mead, UM

- **Byrd, Nia** (Georgia State University ~ Graduate)
- **Jones, Bryana** (Georgia State University ~ Graduate)
- **Lawrence, Kara** (Georgia State University ~ Graduate)

Session 6: 3:30 – 4:45

6A - Ford A

A portrait of queer Mississippi: Findings from a statewide survey of LGBTQ Mississippians

Moderator: Kevin Cozart, UM

- **Cutts, Quiana** (Mississippi State University ~ Faculty)
- **Walsh, Melanie** (Mississippi State University ~ Graduate)

6B - Ford B

Images of Women in Early Modern English Literature: From “The Faere Queene” to “The Rover”

Moderator: Anne MacMaster, Millsaps College

- **Moss, Morgan** (Millsaps College ~ Undergraduate) * *“Monstrous Allegories: Distortion of the Female Form in Spenser’s The Faerie Queene”*
- **Parson, Jessica** (Millsaps College ~ Undergraduate) * *Aphra Behn’s “The Rover”*
- **Vedala, Sree** (Millsaps College ~ Undergraduate) * *“His ‘Life upon Her Faith’: Desdemona as Ideal Woman in Renaissance Play and Twentieth Century Film”*

6C – Ford C

People of Color Caucus – Resist & Subvert!

Moderator: Sushmita Chatterjee, Appalachian State Univ.

- **Lee, Jieun** (Wake Forest University ~ Faculty) * *Sounds of Belonging, Spaces of Becoming: Re-envisioning Transnational Adoption on Stage*

6D – Ford D

Documenting Queer Southern Pride

Moderator: Frankie Barrett, UM

- **Campbell, Ellie** (University of Mississippi ~ Graduate) * *Tupelo Pride*
- **LaBorde, Monique** (Non-Academic ~ Radio Producer) * *Somewhere Queer: Documenting LGBTQ Pride Celebrations in the South*
- **Lewis, Brennan** (University of North Carolina at Chapel Hill ~ Undergraduate) * *Somewhere Queer: Documenting LGBTQ Pride Celebrations in the South*

6E - Butler Auditorium

Violence and Pop Culture

Moderator: Elizabeth Venell, UM

- **Austin, Gregory** (The University of Alabama ~ Faculty) * *What Women Write: Violence and Consent in Slash Fiction*
- **Bourland, Laura** (Georgia Gwinnett College ~ Faculty) * *What Women Write: Violence and Consent in Slash Fiction*
- **Johnson-Bailey, Juanita** (University of Georgia ~ Faculty) * *Gender, Media, & Miseducation: The Skewing Images of Women at the Intersection*
- **Ray, Nichole** (University of Georgia ~ Faculty) * *Gender, Media, & Miseducation: The Skewing Images of Women at the Intersection*

6F - McMillan Boardroom

In the Streets and Behind the Rail: Toward Radical Care and Support in Local Organizing

Moderator: JT Thomas, UM

- **Berry, Rachelle** (University of Georgia ~ Graduate)
- **Bivens, Briana** (University of Georgia ~ Graduate)
- **Parker, Mariah** (University of Georgia ~ Graduate)
- **Scott-Blackwell, Imani** (University of Georgia ~ Undergraduate)

Session 7: 5:00 – 6:15

7A - Ford A

#MeToo and Sexual Pathology

Moderator: Carrie Smith, UM

- **Davis, Rebekah** (Norfolk State University ~ Graduate) * *Rape Myths in Local Southern Newspapers in the #MeToo era*
- **Stevens, Sara** (Duke University ~ Graduate) * *Abstinence-Only and the Hinderance of Sexual Identities*

7B - Ford B

Lesbian Land: A Roundtable on the Landyke Movement

Moderator: Hooper Schultz, UM

- **Enszer, Julie** (Sinister Wisdom – Editor)
- **Luis, Keridwen** (Harvard University – Faculty)
- **Norman, Rose** (University of Alabama in Huntsville - Faculty)
- **Schultz, Hooper** (University of Mississippi ~ Graduate)

7C - Ford C

Teaching and Writing With Ms. Workshop

Moderator: Karon Jolna, Ms. Magazine

- **Berger, Michele Tracy** (UNC-Chapel Hill)
- **Byrd, Jen** (UNC-Charlotte)
- **Finley, Kelly** (UNC-Charlotte)
- **Jolna, Karon** (Ms. Magazine ~ Director and Editor)
- **Kuumba, M. Bahati** (Spelman College)

7D - Ford D

Transforming the Campus: Queer, Black, Feminist

Moderator: Sarah Heying, UM

- **Culver, Steve** (North Carolina Agricultural and Technical State University ~ Faculty) * *Why Aren't There More Black Women in Leadership at HBCUs?: A Queer Analysis of HBCU Leadership*
- **Durham, Lori** (North Carolina Agricultural and Technical State University ~ Graduate) * *Why Aren't There More Black Women in Leadership at HBCUs?: A Queer Analysis of HBCU Leadership*
- **Heinrich, Stefanie** (University of Oklahoma ~ Graduate) * *Rethinking Oil and Water: Allowing Space for Religion in LGBTQ+ Ally Training Programs*
- **Hill, Zoe** (East Tennessee State University ~ Graduate) * *Rebranding Women's Studies Programs to Develop a Broader Recruitment Base*

7E - Butler Auditorium

Pop Culture: Performativity, Image, Song, and TV

Moderator: Jaime Hovey, UM

- **Holmes, Thomas** (East Tennessee State University ~ Faculty) * *Cindy Walker and "Man Talk"*
- **Venell, Elizabeth** (University of Mississippi ~ Faculty) * *Catfish, Queer Theory, and the Problem of the Inner Self*
- **Zhu, Chichi** (University of North Carolina - Chapel Hill ~ Undergraduate) * *Queerness as an Identity Axis in Zinemaking*

6:30 PM Caucus Social

Join fellow caucus members for a casual "intersectional" dinner and networking. Feel free to move between different caucuses.

Proud Larry's

SATURDAY, MARCH 9

7:30 – 8:30 AM

Women's and LGBTQ+ Resource Center Directors' Breakfast

Join your fellow directors for a casual conversation about issues facing women's and LGBTQ Resource Centers. Space limited. RSVP required.

McMillan Boardroom

9:00 AM – 1:15 PM

SEWSA Board Meeting

McMillan Boardroom

Session 8: 9:00 – 10:15

8A - Ford A

#MeToo and Masculinity

Moderator: Joan Wylie Hall, UM

- **Bright, Michelle** (University of Mississippi ~ Faculty) * "Boys Will Be Boys: The Mothering of American Men and the #MeToo Movement"
- **Shackelford, Ashleigh** (Morgan State University ~ Graduate) * *Guys Like That: On Rape Culture, the Politics of Innocence, and Fat Oppression*
- **Solomon, Eric** (Emory University Oxford College ~ Faculty) * *Boys Erased and the Trouble with Coaching: Confronting Male-Male Sexual Violence in the age of #MeToo*

8B - Ford B

Creative Writing Panel: Southern Women's Voices

Moderator: Anne MacMaster, Millsaps College

- **Johnson, Amara** (Millsaps College ~ Undergraduate) * "The Return" (Short Story)
- **MacNamara, Brenna** (Millsaps College ~ Undergraduate) * "Window View"
- **Moffett, MacKenzie** (Millsaps College ~ Undergraduate) * "Ode to Men" and other poems
- **Smith, Tkelah** (Millsaps College ~ Undergraduate) * "A Modern Gulliver's Travels"

8C - Ford C

Envisioning a Feminist and Queer Classroom

Moderator: Don Unger, UM

- **Cleveland, Courtney** (Millsaps College ~ Undergraduate) * *STEM and Social Deviance: An Analysis of Race and Gender Relationships in the Undergraduate Science Classroom*
- **Coldiron, Macey** (Appalachian State University ~ Graduate) * *When Decentralizing the Classroom Doesn't Work: A Female Graduate Student Teacher Speaks Out on Sexism and Authority*
- **Hughes Miller, Michelle** (University of South Florida ~ Faculty) * *Queer in STEM in the South: Locating Undergraduate Narratives of Inclusion and Marginalization*

8D - Ford D

Black Masculinities

Moderator: EJ Edney, UM

- **Canty, Jayme** (University of Nevada, Las Vegas (UNLV) ~ Faculty) * "The Black Queer Lens to the American South: Heterosexism as Oppressive Reality and the Utilization of 'Fam' as Healing."
- **Simmons-Thorne, Nathaniel Naomi** (University of South Carolina—Columbia ~ Undergraduate) * *The Myth of Gender Neutral Racial Justice: How All the Blacks Became Men*

8E - Butler Auditorium

Transnationalism

Moderator: Diane Marting, UM

- **Bolin, Jessica** (The University of North Carolina at Chapel Hill ~ Undergraduate) * *Domestic Violence in Kosovo: Urban Rural Divide?*
- **Davidson, Jessica** (James Madison University ~ Faculty) * "Suffering for Our Mother's Sins: Sexuality and Survival during the Franco Dictatorship as seen through Spanish Film"
- **Ogundoro, Oluwafisayo** (East Tennessee State University ~ Graduate) * *Gender Work-life in Nigeria*

Session 9: Saturday ~ 10:30 – 11:45

9A - Ford A

Brett K and #MeToo

Moderator: Kirsten Dellinger, UM

- **Champagne, Jennifer** (Wake Forest University ~ Graduate) * #MeToo or #HimToo?: *Rape Culture and the Illusion of Justice in The Faerie Queene Book V*
- **Winterich, Julie** (Guilford College ~ Faculty) * *In the Landscape of #MeToo, How do the Privately Traumatized Support Student Survivors and Activists?*

9B - Ford B

Queer Southern Literature

Moderator: Jaime Harker, UM

- **Byrd, Jen** (University of North Carolina at Charlotte ~ Faculty) * *Is This How it Always Is?: Laurie Frankel's Novel & Parenting Trans Children in the South*
- **Russell, Kara** (East Tennessee State University ~ Independent Scholar (MA graduate)) * *La Flâneuse from Fayetteville: Bertha Harris's "Feminist Avant-Garde"*
- **Sumner, Caitlan** (University of Alabama ~ Graduate) * *Trans (In)Visibility: Suzan-Lori Park's Getting Mother's Body as Trans Narrative*

9C - Ford C

Transforming the Southern Classroom through Feminist Pedagogies

Moderator: Kate Kellum, UM

- **Schultz, Kathy Lou** (University of Memphis ~ Faculty)
- **Wilson, Brandy T.** (Mississippi University for Women ~ Faculty)
- **Wright, Lyn** (University of Memphis ~ Faculty)

9D - Ford D

Trans and Pansexual Theory

Moderator: Rachel Johnson, UM

- **Keesler, Jordan** (Agnes Scott College ~ Undergraduate) * *Put Me In Coach: Transgender Athletic Inclusion Policy*
- **Rogers, Baker** (Georgia Southern University ~ Faculty) * *"Gay Men are the Worst": Trans* Men's Experiences of Transphobia, Homophobia, and Cissexism in the Queer Community*

9E – Butler Auditorium

Activism in Southern Asia

Moderator: Minjoo Oh, UM

- **Jabr, Suad** (University of North Carolina at Chapel Hill ~ Undergraduate) * *Becoming Refugees, Becoming Activists: Narratives of Authenticity, Vulnerability, and Deservingness in Queer Syrian Refugee Activism*
- **Chanda, Sagnika** (University of Pittsburgh ~ Graduate) * *"No One Killed Jessica": Gendered Violence and Cellphone Activism before #MeToo in India*

Session 10: Saturday ~ 12:00 – 1:15

10A - Ford A

Critical Race Studies and Activism

Moderator: Kirk Johnson, UM

- **Crunelle, Tanner** (College of Charleston ~ Undergraduate) * *Post/humanist Activism: An Interpretive Case Study*
- **Evans, John (Parker)** (University of Alabama ~ Graduate) * *"Their Very Mode of Having": Recognition and Possession Under the White Nation-state*
- **Stanley, Michelle** (UNC Charlotte ~ Graduate) * *A Call for Cultural Resurgence: Challenging Heteropatriarchal Ideals within Indigenous Nations*

10B - Ford B

Gender in American Literature from the Civil War and Reconstruction

Moderator: Kathryn McKee, UM

- **Bryant, Elisa** (University of Mississippi ~ Graduate) * *"Two Selves at War": Female Identity and the Regional Conflict in Sherwood Bonner's "Like unto Like"*
- **Nick, Allison** (University of Mississippi ~ Graduate) * *"The Proto-Feminism of Female Soldiers in Civil War Sensational Literature"*
- **Norwood, Isabel** (University of Mississippi ~ Graduate) * *The Politics of Victimization in María Amparo Ruiz de Burton's "Who Would Have Thought It?"*

10D - Ford D

Destabilizing Violence

Moderator: Kendrick Wallace, UM

- **Cannoy, Carly Bess** (UNC Gillings School of Global Public Health ~ Undergraduate) * *Creating "Safe Dates" for Teens: Changing gender stereotypes as teen dating violence prevention*
- **Milam, Brayden** (Kennesaw State University ~ Undergraduate) * *Masculinity, Money, Militarism, and Muscles: The Historical and Social Context of the Athlete Health Crisis*

10E - Butler Auditorium

When Religion and Abortion Collide

Moderator: Kevin Cozart, UM

- **Schmidt, Lynne** (AbortionChat ~ Graduate)

Any further changes to schedule will be updated through the conference app.

ABOUT THE SARAH ISOM CENTER

History:

The Sarah Isom Center for Women and Gender Studies was established at The University of Mississippi in 1981 to address the changing roles and expectations of women students, faculty, and staff. The University has provided educational opportunities for women longer than any other state university in the South. When UM opened its doors to women in 1882, eleven women registered for classes; one of these became the valedictorian of her class.

In 1885, Professor Sarah McGehee Isom became the University's first female faculty member. Named in her honor, the Isom Center continues the tradition of promoting education and opportunities for women, who today constitute more than half of the UM student population.

Dr. Joanne V. Hawks served as the founding director of the Sarah Isom Center from 1981-1998. Since that time, the Center and academic program in gender studies have been led by faculty members across disciplines.

Who We Are:

The Sarah Isom Center performs both academic and service functions. It is dedicated to promoting research and scholarship about women and gender by developing a multidisciplinary program of study that will help students appreciate the special concerns, contributions, and perspectives of people of all genders. These studies include an analysis of how gender intersects with other social categories, such as race, ethnicity, class, sexuality, age, nationality, and ability. The center coordinates the undergraduate minor in gender studies and the Graduate Certificate in Gender Studies.

The Sarah Isom Center also expresses its commitment to gender and women's studies by reaching out to the community through a variety of programs and services. These include brown bag talks and forums during the semester and the annual Lucy Somerville Howorth Lecture in Women's Studies. The Center also sponsors an annual Sarahfest in the fall which highlights the contributions women have made to the arts and the Isom Student Gender Conference in the spring as well as events for Women's History, LGBTQ+ History, and Sexual Assault Awareness Months.

Located in Suite D on the third floor of Lamar Hall, the Center offers students, faculty, staff, and visitors a gathering



One of the highlights of Sarahfest are the special Thacker Mountain Radio shows recorded on the grounds of Faulkner's Rowan Oak.

place, as well as an atmosphere of mutual encouragement and support for women of all ages and backgrounds and for organizations concerned with gender issues, equity, and justice.

Mission:

The Sarah Isom Center for Women and Gender Studies educates about issues of gender and sexuality, promotes interdisciplinary research, and advocates for diversity, equity, and inclusion.

Faculty and Staff:

- Dr. Jaime Harker, Director and Professor of English
- Dr. Theresa Starkey, Associate Director and Instructional Associate Professor of Gender Studies
- Dr. Elizabeth Venell, Assistant Professor of Gender Studies
- Dr. Leslie Delassus, Adj. Instructor of Gender Studies
- Dr. Julie Enszer, Adj. Instructor of Gender Studies
- Dr. Jaime Hovey, Adj. Instructor of Gender Studies
- Mr. Kevin Cozart, Operations Coordinator & Coordinator of Community Engaged Learning and Research
- Mr. Hooper Schultz, Graduate Assistant
- Ms. Jamie Baker, Higher Ed. Practicum Student
- Mr. Kendrick Wallace, Higher Ed. Practicum Student
- Ms. Rose Maten, Higher Ed. Practicum Student

**Visit us online at
sarahisomcenter.org**

CONFERENCE SPONSORS

PRESENTING



THE UNIVERSITY of
MISSISSIPPI
DIVISION OF DIVERSITY AND
COMMUNITY ENGAGEMENT



SUPPORTING

- The Division of Outreach and Continuing Education
- The Ole Miss Student Union
- The Office of Research and Sponsored Programs
- The Graduate School
- The Center for Inclusion and Cross Cultural Engagement
- Delta Grind
- Violet Valley Bookstore

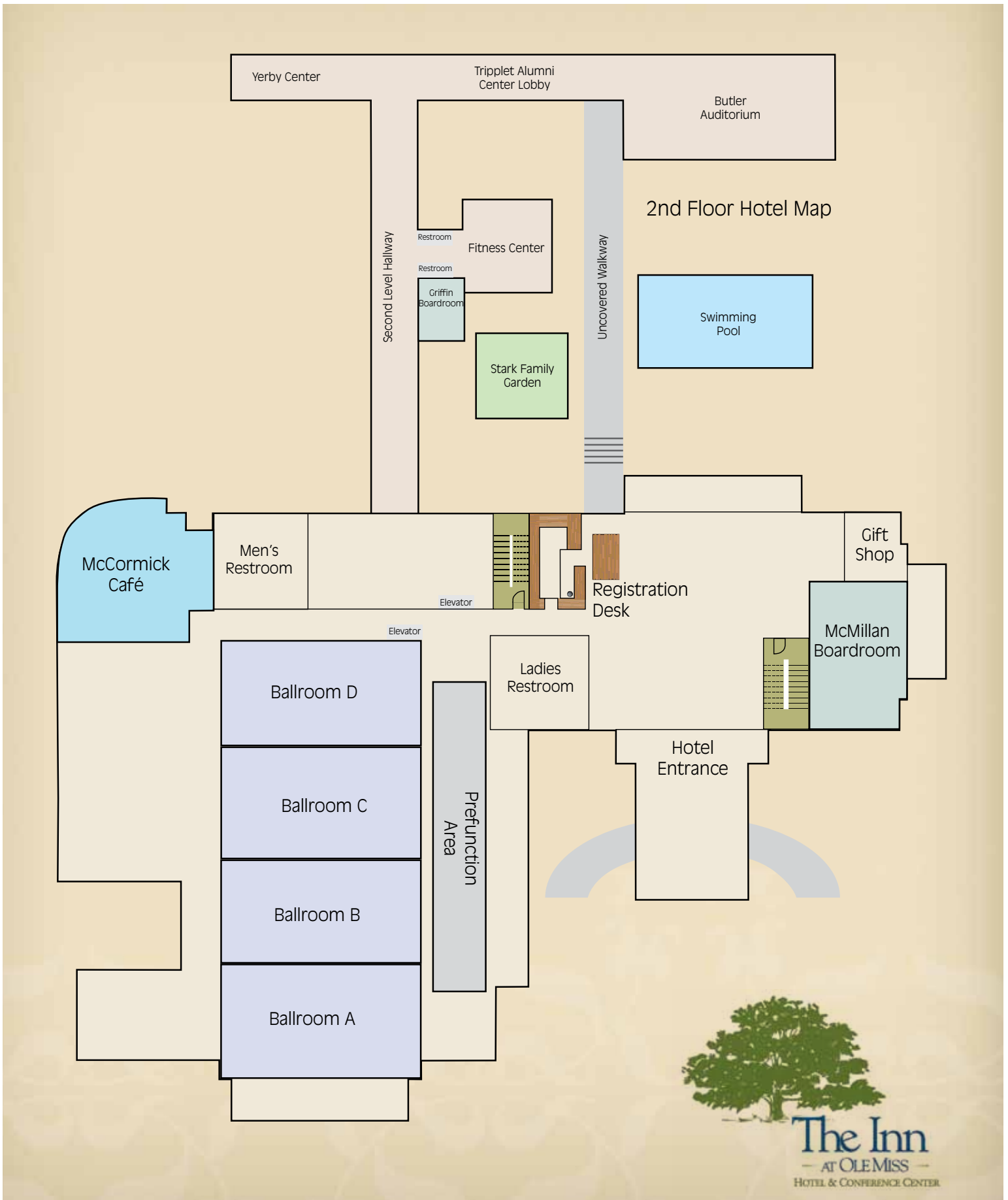
ACKNOWLEDGMENTS

- Mary Leach and Griffin Stroupe with Outreach
- MaryGrace Vasilyev, Melissa Moffett, Gwen Dwyer, and Joseph Kennedy from the Inn at Ole Miss
- Bradley Bishop and Lindsey Dillon-Maginnis with the Lyric Oxford
- Scott Caradine with Proud Larry's
- Blake Summers and Jonathan Kent Adams with OutOxford



Blake Summers (c) and
Jonathan Kent Adams (r) with OutOxford

CONFERENCE FACILITIES



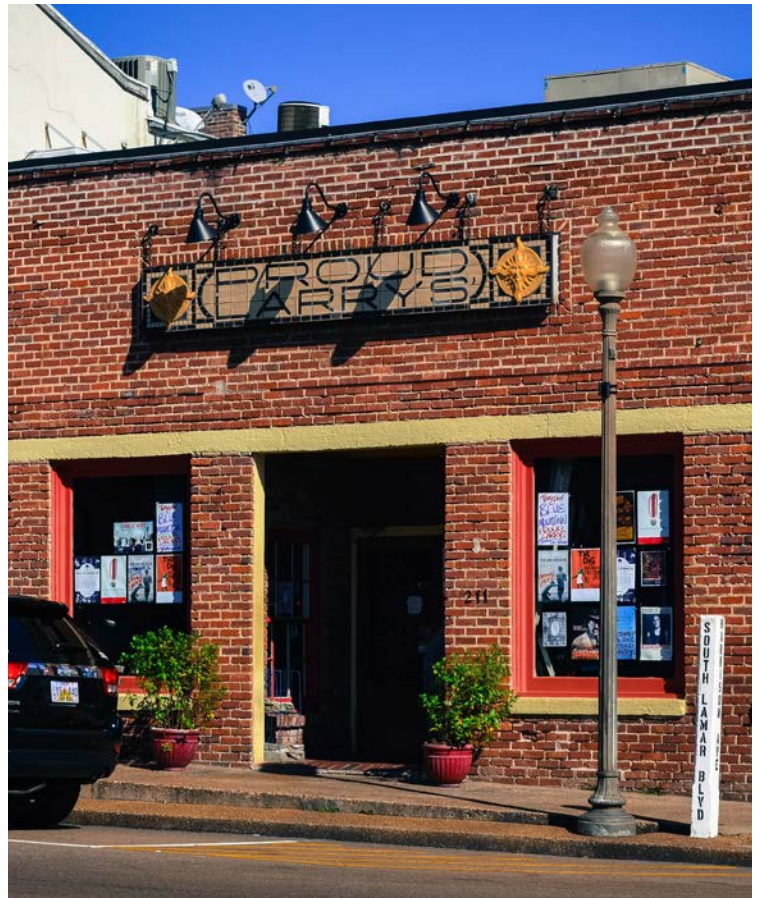
GERTRUDE C. FORD CENTER



THE LYRIC OXFORD



PROUD LARRY'S



SEWSA EXECUTIVE BOARD

President (2018 - 2020)

Phyllis Thompson
Women's Studies Program
East Tennessee State University
Johnson City, TN
thomsop@etsu.edu

President-Elect (2018 - 2020)

Stacy Keltner
Gender and Women's Studies
Kennesaw State University
Kennesaw, GA
skeltner@kennesaw.edu

Past-President (2018 - 2020)

Jennifer Purvis
Department of Gender and Race Studies
The University of Alabama
Tuscaloosa, AL 35487
jpurvis@ua.edu

Treasurer (2016 - 2021)

Kelly Finley
Women's and Gender Studies Program
UNC Charlotte
Charlotte, NC
kafinley@uncc.edu

Secretary (2018 - 2020)

Jalessah Jackson
Gender and Women's Studies
Kennesaw State University
Kennesaw, GA
jjack196@kennesaw.edu

Director, Communications & Marketing (2019 - 2021)

Ashley McFarland
Gender and Women's Studies
Kennesaw State University
Kennesaw, GA
amcfarl7@kennesaw.edu

Director, Membership & Outreach (2017 - 2019)

Heather Brown
dr.heather.a.brown@gmail.com

LGBTQ Caucus Chair (2018 - 2019)

Hilary Malatino
Women's Studies Program
East Tennessee State University
Johnson City, TN
hilary.malatino@gmail.com

People of Color Caucus Chair (2018 - 2019)

Sushmita Chatterjee
Gender, Women's and Sexuality Studies
Appalachian State University
Boone, NC
chatterjees@appstate.edu

Student Caucus Chairs (2019)

Hooper Schultz (Southern Studies)
Laura Wilson (English)
The University of Mississippi

INSTITUTIONAL MEMBERS

The Southeastern Women's Studies Association would like to thank our 2019 Institutional Members for their support! Your membership supports our annual conference, the SEWSA dissertations grants, student travel grants, and the future of our organization.

- * College of Charleston
- * Eastern Carolina University
- * East Tennessee State University
- * Emory University
- * Florida Atlantic University
- * Florida State University
- * Georgia State University
- * Kennesaw State University
- * Millsaps College
- * North Carolina State University
- * The University of Alabama
- * The University of Alabama in Huntsville
- * The University of Georgia
- * The University of Kentucky
- * The University of Mississippi
- * The University of North Carolina - Charlotte
- * The University of North Carolina - Charlotte ~ Women + Girls Research Alliance
- * The University of South Carolina Upstate
- * The University of South Florida
- * The University of Tennessee at Martin



**Welcome
SEWSA!**

**303 N. Main Street
Water Valley, MS**

<https://www.violetvalley.org/>

Hours: Sat. 10 AM - 4 PM



SEWSA 2020 – MARCH 26 – 28



Call for Papers Embodying Disobedience, Crafting Affinities University of South Florida - St. Petersburg

The Department of Women's and Gender Studies at the University of South Florida (USF) is pleased to host the 2020 SEWSA Annual Conference in Tampa Bay, Florida. Our theme—Embodying Disobedience, Crafting Affinities—figures embodiment and diverse lived experiences as the lifeblood of resistant politics and the livelihood of building alliances across our many differences. The theme echoes the broader mission of the interdisciplinary field of Women's and Gender Studies (WGS). With its distinctive blend of research, programming, teaching, and advocacy, WGS questions conventional wisdom, challenges the status quo, critiques intersecting gendered, sexual, and racialized inequities and injustices, and strives to create social change for more equitable, ethical, and just futures. Our theme takes special inspiration from the work of feminists of color—including early abolitionists like Sojourner Truth and Harriet Tubman, civil rights activists such as Fannie Lou Hamer, Septima Clark, and Rosa

Parks, groups such as the Combahee River Collective, writers and teachers like Audre Lorde, June Jordan, Mitsuye Yamada, Cherrie Moraga, and Gloria Anzaldúa, The Movement for Black Lives, founded by Alicia Garza, Patrisse Cullors, and Opal Tometi, the #sayhername campaign, the reproductive justice movement, and the work of researchers and theorists such as bell hooks, Angela Davis, Kimberle Crenshaw, Lila Abu-Lughod, Emma Perez, Saidiya Hartman, Gayatri Spivak, Dean Spade, Jasbir Puar, Fred Moten, C. Riley Snorton, and the late Saba Mahmood, among many, many others. The work of these scholar-activists is a source of critical insight into the workings of what the Combahee River Collective called interlocking systems of oppression, and a reminder that disobeying unjust state logics and challenging administrative and other forms of violence is literally a matter of life and death, more so for some populations than for others. For this reason, so too do these trailblazing

and cutting-edge activists and scholars prompt us to recall the imperatives of self-reflexivity, critical positionality, and situated knowledges in confronting inequality and injustice from a variety of intersectional and transnational perspectives.

In these ways and others, our theme invites a wide range of interdisciplinary critical engagements with the body politics of disobedience. How, for instance, do different forms and modes of racialized and gendered embodiment inform strategies of disobedience to state regulation, the criminalization and dispossession of multiply-marginalized populations, and the ongoing upward redistribution of wealth and resources under neoliberalism? At the same time, the theme invites consideration of how to better craft stronger and more capacious affinities between counterhegemonic projects, for example, between The Movement for Black Lives, disability justice activism, struggles for indigenous decolonization, trans and intersex

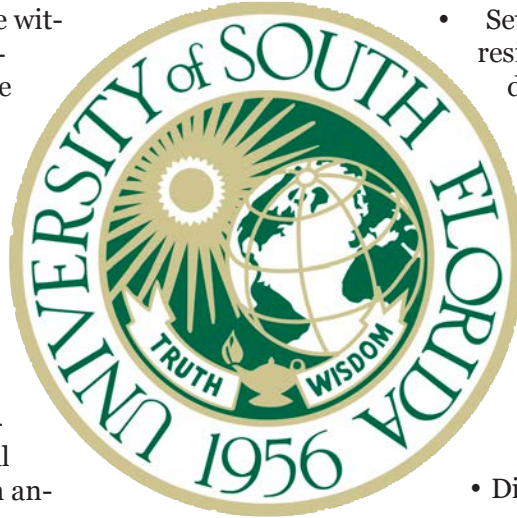
rights, prison abolition, and intersectional feminist, queer, and anti-racist research and activism. “Embodying Disobedience, Crafting Affinities,” then, seeks to emphasize the continuing import of multi-issue politics in efforts to move beyond commodified notions of allyship towards relations of radical solidarity and mutual interdependence.

In the current historical moment we are witnessing unprecedented interest in feminism and a resurgence of activism in the same space as increasing white nationalist, anti-trans, anti-immigrant, and anti-choice rhetoric, policy, and legislation. In such a climate, this year’s SEWSA takes the opportunity to draw insight and inspiration from the past and chart a course toward different, hopefully more just—and perhaps also more queer—futures. As 2020 marks not only the 59th quadrennial presidential election, the centennial of the 19th Amendment, and the fiftieth anniversary of the first women’s studies program, we want to remember the ways in which women’s studies has linked theory to practice, not only to transform the present but also to know the past differently and to imagine and create a world beyond it. Women’s studies, from its inception, ranged across the disciplines, found resources where it could in the name of survival and resilience, and insisted on forms of interdisciplinary inquiry that today demand questions of gender, race, and sexuality to disrupt the naturalized status quo. Women’s and Gender Studies, at its best, embodies disobedience—to the disciplines, reigning ideas of sex and gender, the nation, racial capitalism, and single-issue politics—while simultaneously fighting to craft political and intellectual affinities that will make a difference in the world.

We invite proposals that envision and examine diverse ways of embodying disobedience and crafting affinities across a wide range of theories, practices, and contexts. All disciplines, methodologies, and styles of presentation are welcome, and from students and scholars at all levels.

Possible presentation topics might include (but are not limited to):

- The history, current state, and future of feminist, LGBTQ+, and anti-racist activisms
- Political participation and movement building leading up to the 2020 U.S. election
- Linkages between Black Lives Matter, disability justice activism, immigrant rights, and trans and intersex mobilization for self-determination and bodily integrity



- The uses of anger (in Audre Lorde and beyond)
- Politics and affect (outrage, repugnance, disgust, humor, pride, envy, loss)
- Scholar-activist coalitions
- Settler colonialism and decolonial feminist resistance, especially within Caribbean and diasporic feminisms
- Increasing women, POC, and LGBTQ+ political representation
- Possibilities and limitations of the #MeToo movement
- Challenges to Title IX under the Trump Administration
- Humanitarianism and neoliberalism
- Digital media and activism
- Interdisciplinary public scholarship in the era of “fake news”
- Feminist and queer performance studies as disobedience
- Afro-Latina identities and politics
- Black feminist leadership and social movements
- Disability studies: pedagogies and politics
- Fat studies, embodiment, and activism
- Trans and intersex studies and public policy

Session Types and Instructions:

- Individual presentation proposals: 200-word proposal
- Panel presentation proposals: 3-4 presenters, 600-word proposal (We strongly encourage panel proposals from graduate and undergraduate students.)
- Roundtable proposals: 6-8 presenters, 10-minutes each (600-word proposal)
- Slow science proposals (works in progress): 3-4 presenters, 600-word proposal
- Workshops: 2-4 presenters, 600-word proposal

Proposal submission deadline is December 6, 2019 and should be submitted to <https://tinyurl.com/SEWSA20>

NOTES

NOTES



ESTABLISHED
1981

*Sarah
Isom*

CENTER FOR
WOMEN & GENDER STUDIES